

This drawing is copyrighted and is subject to copyright protection as an "architectural work" under 17 U.S.C. Sec. 101 et seq. The protection includes but is not limited to the overall form as well as the arrangement and composition of spaces, materials, color and elements in the design. Under such protection, unauthorized use of this drawing may result in the cessation of construction or building being started and/or monetary compensation being awarded to The Robinson Green Beretta Corporation (RGB).

Any reproduction, possession, or use of this drawing or any part thereof without the express written permission of RGB, is prohibited. Visitors will be prosecuted to the full extent of the law.

© RGB 2024

Certification

Drawn by AL
Checked by JCI

Revised on
(DATE) (DESCRIPTION)

50 Holden Street
Providence, Rhode Island 02908
Phone: (401) 272-1730
Fax: (401) 273-7158
E-mail: rgbinfo@rgb.net
www.rgb.net
Architecture - Project Management - Interior Design
Project

**COVENTRY
DEPT. OF PUBLIC
WORKS
COVENTRY TOWN
HALL ANNEX**



1675 FLAT RIVER ROAD
COVENTRY, RI 02816

Drawing Status
FOR CONSTRUCTION

Issued On 11/21/2024

Sheet Contents
**ARCHITECTURAL SITE
PLAN**

Project Number. 6834

Drawing No.
A050.1

Sheet of

GENERAL PLAN NOTES

1. THE TRADES CONTRACTORS SHALL, TOGETHER WITH THE CONTRACTOR (OWNER), COORDINATE ALL WORK w/ EXISTING UTILITIES. NOTIFY ARCHITECT OF ANY DISCREPANCIES BEFORE PROCEEDING WITH WORK.
2. ALL DIMENSIONS TO EXTERIOR CONSTRUCTION ARE TO FACE OF MASONRY (FOM) U.N.O.
3. REFER TO DRAWING G001 FOR ABBREVIATIONS AND SYMBOLS DESCRIPTION
4. CONTRACTOR TO WORK TO MINIMIZE DISRUPTIONS TO ACTIVITIES IN THE TOWN HALL ANNEX AND MAINTAIN A CLEAN AND SAFE JOBSITE.
5. COORDINATE SITEWORK WITH RIDOT DESIGN STANDARDS AS APPLICABLE.
6. RE: **A050.2 FOR SCHEDULE OF SURFACE FINISHES.**
7. ALL DRIVE AISLES ARE TO BE A MINIMUM OF 24' WIDE U.N.O.
8. ALL PARKING AREAS ARE NOT TO EXCEED 2% SLOPE AND WALKWAYS ARE NOT TO EXCEED 5% RUNNING SLOPE / 2% CROSS SLOPE

SITE PLAN WORK NOTES

- A14.1 F&I NEW CONCRETE WALKWAY. RE: SITE PLAN AND SCHEDULE OF SURFACE FINISHES.
- A14.2 F&I NEW ASPHALT. PROVIDE PARKING STRIPING AS APPLICABLE. RE: SITE PLAN AND SCHEDULE OF SURFACE FINISHES.
- A14.3 F&I NEW 7" CONCRETE CURBING. RE: 4/A050.2 FOR DETAIL.
- A14.4 F&I NEW CHAIN LINK FENCE AND FENCEPOSTS. RE: 6/A050.2 FOR DETAIL.
- A14.5 F&I NEW LIGHTPOST AND CONCRETE BASE. RE: 7/A050.2 FOR DETAIL.
- A14.6 F&I NEW GARDEN BED. COORDINATE WITH NURSERY.
- A14.7 RELOAM AND SEED THE GRADE FROM CONSTRUCTION.
- A14.8 F&I SALVAGED GENERATOR IN ORIGINAL LOCATION.
- A14.9 F&I SALVAGED STORM DRAIN FRAME AND COVER.
- A14.10 F&I SALVAGED SANITARY CLEANOUT CAP. RESET CAP HEIGHT AS NEEDED.
- A14.11 F&I SALVAGED MANHOLE COVER. RESET COVER HEIGHT AS NEEDED.
- A14.12 F&I NEW ADA CURBING. RE: 3/A050.2.
- A14.13 F&I NEW LAYER OF ASPHALT ON MILLED SURFACE. PROVIDE PARKING STRIPING AS APPLICABLE. RE: SITE PLAN AND SCHEDULE OF SURFACE FINISHES.
- A14.14 F&I SMALL ORNAMENTAL TREE MAX. 15' HEIGHT
- A14.15 F&I SALVAGED FIRE HYDRANT.
- A14.16 F&I SWIFTDRAIN 600 SERIES 8" X 6" PRE SLOPED GALVANIZED STEEL TRENCH DRAIN SYSTEM.
- A14.17 F&I FLO-WELL KIT DRYWELL SYSTEM. COMPLY WITH ALL CLEARANCES REQUIRED FOR FRENCH DRAIN, DRYWELL AND DRAINAGE PIPE. RE: DETAIL 1/A050.2
- A14.18 F&I 1'-0" CAPE COD BERM. RE: 2/A050.2.
- A14.19 F&I PRECAST CONCRETE WHEELSTOP. RE: 9/A050.2.
- A14.20 F&I 3' RADIUS CURBING
- A14.21 F&I 10' RADIUS CURBING
- A14.22 F&I 6' RADIUS CURBING
- A14.23 F&I 15' RADIUS CURBING
- A14.24 F&I 20' RADIUS CURBING

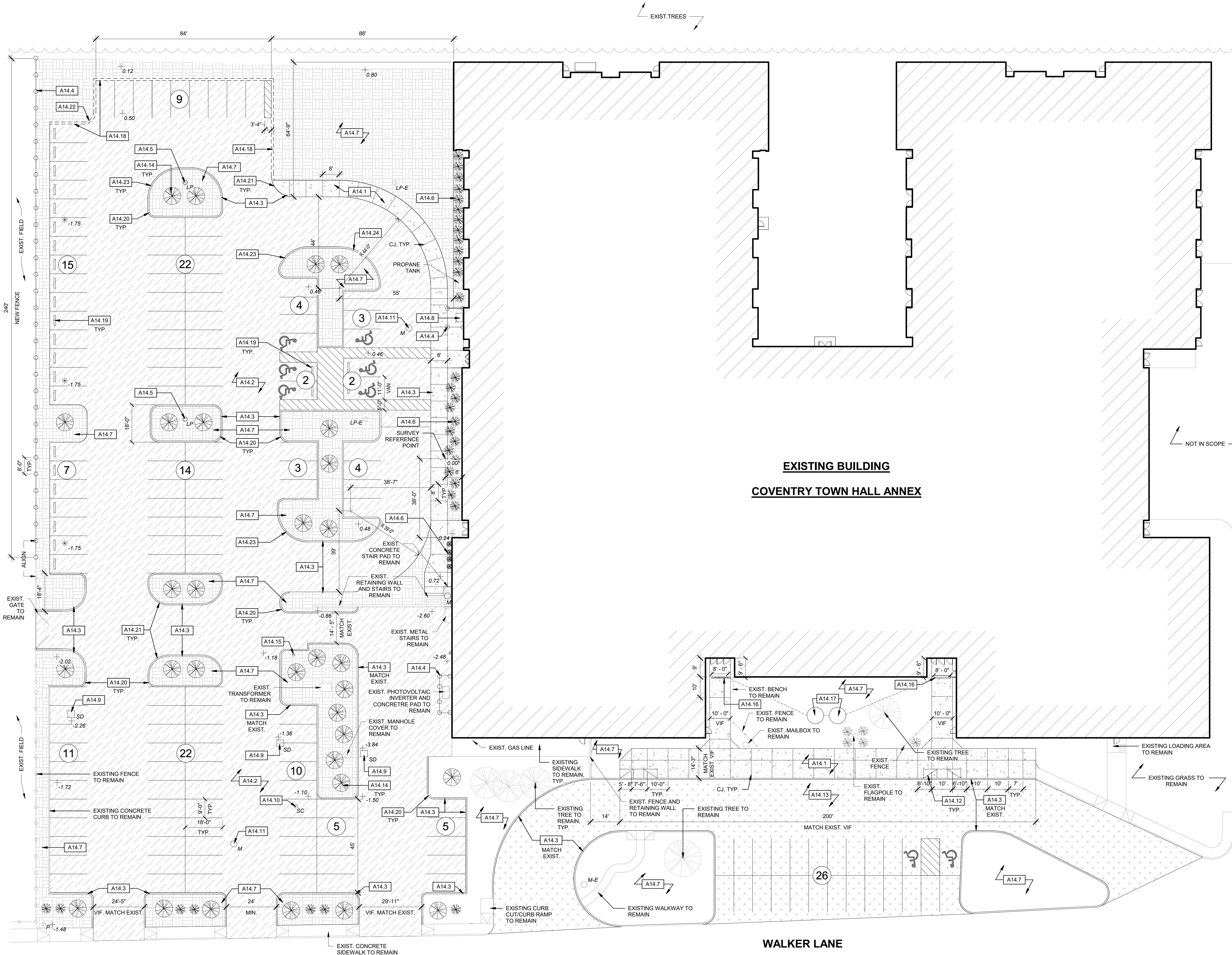
CONSTRUCTION LEGEND

- EXISTING WALL/ITEM TO REMAIN
 - NEW PARKING/SITE ELEMENT
 - CAPE COD BERM. RE: A14.18 AND 2/A050.2
- F&I = FURNISH AND INSTALL
- # WORK NOTES WITHOUT AN ARROW INDICATE AN ENTIRE SPACE/AREA.
 - # WORK NOTES WITH AN ARROW(S) INDICATE SPECIFIC AREAS &/OR ITEMS.
 - EXISTING BLDG: COVENTRY TOWN HALL ANNEX
 - NEW ASPHALT. RE: A14.2 FINISH 'B'
 - NEW MILLED ASPHALT. RE: A14.13 FINISH 'A'
 - NEW CONCRETE. RE: A14.1 FINISH 'C'
 - NEW GRASS. RE: A14.7
 - SD STORM DRAIN. RE: A14.9
 - M MANHOLE. RE: A14.11
 - M-E EXISTING MANHOLE TO REMAIN
 - SC SANITARY CLEANOUT. RE: A14.10
 - P EXISTING POWER POLE
 - LP-E EXISTING LIGHT POLE
 - LP NEW LIGHT POLE
 - ### EXISTING SPOT GRADE TO REMAIN
 - *### NEW SPOT GRADE
 - NEW BUSH/SHRUB
 - NEW TREE
 - EXIST. TREE
 - # PARKING COUNT

USAGE OFFICE, PUBLIC OR PROFESSIONAL ADMINISTRATION OR SERVICE BUILDINGS 3 PLUS 1 FOR EACH 250 SF OF FLOOR.

PROPOSED RENOVATED FLOOR AREA = 31,680 SF / 250 = 127+ 3= 130 SPACES REQUIRED

NEW PARKING = 85 SPACES (INCLUDES 1 VAN AND 5 ADA SPACES)
EXISTING PARKING = 79 SPACES (INCLUDES 2 ADA SPACES)
TOTAL PARKING = 164 SPACES (INCLUDES 8 ADA SPACES)



PLAN NORTH
TRUE NORTH

1 PROPOSED ARCHITECTURAL SITE PLAN
A050.1 Scale: 1" = 20'-0"

**EXISTING BUILDING
COVENTRY TOWN HALL ANNEX**

WALKER LANE