



FUSS & O'NEILL

Wastewater Facility Plan Progress Update

Presentation to
Town of Coventry, RI

September 26, 2022

Agenda

- **Aspects of Facility Planning Process**
 - Data Collection
 - Coordination with Stakeholders
 - Public Participation
 - Evaluate Needs
 - Develop Alternatives
 - Recommend Plan
- **Work Completed or In-Progress**
- **Future Efforts**
- **Questions**



WORK COMPLETED

Public Participation

- Developed Facility Plan Flyer
 - Posted to Town's Website
- Developed Questionnaire
 - Mailing to Parcel Owners in Eastern Portion of Town per DRAFT Planning Areas
- Met with and Presented the Facility Planning Process to Tiogue Lake HOA on August 31st
 - Informal Discussion Regarding HOA Perspective on Sewer Extensions Around Tiogue Lake:
 - Resounding support for Sewer Extension with Assessment Cap / Elimination of Cost Uncertainty

The flyer is titled "WASTEWATER PLANNING FOR Town of Coventry, RI" and features logos for the Town of Coventry, DEM Rhode Island, and Fuss & O'Neill. It is divided into three main sections: "PARCELS WITH ON-SITE SYSTEMS", "SEWER FACILITY PLANNING", and "PARCELS ALREADY SEWERED". A map on the right shows planning areas with a legend. A "PUBLIC PARTICIPATION" section at the bottom details a questionnaire mailing and upcoming open house and public hearing events. Green callout bubbles provide additional context.

WASTEWATER PLANNING FOR
Town of Coventry, RI

DEM
RHODE ISLAND

FUSS & O'NEILL
ENGINEERS • SCIENTISTS • PLANNERS

WHY?
Sewer Facility Plan Update Required by RIDEM
Facility Planning by Town of Coventry's Consultant
Fuss and O'Neill Inc.
(Summer 2022 – Winter 2023)

Public Awareness

PARCELS WITH ON-SITE SYSTEMS
Systems compliant with standards may remain.
Repair or replace with advanced system.

RESOURCES AVAILABLE TO YOU:
Community Septic System Loan Program (CSSLP)
<https://www.Rihousing.Com/community-septic-system-loan-program-csslp/>
Licensed Inspectors, Designers
<https://dem.RIGov/environmental-protection-bureau/water-resources/permitting/septic-onsite-wastewater-treatment-3>

SEWER FACILITY PLANNING
Planning areas based on sensitive areas, constricted lot sizes with failed ISDS.
Recommendations may include shared treatment and groundwater discharge, or sewer extension with goal to minimize assessments, especially for areas with limited income.

Need will determine priority for phased sewer extension or community-based shared systems.

PARCELS ALREADY SEWERED
Tiogue Avenue, and areas in Eastern Districts will continue to have sewer service and receive usage invoices.

Legend
• Sensitive Areas Study Area
• Sensitive Areas Study Area
• Sensitive Areas and Potential Sites
• Sewer Lines
• Sewer Lines
• Sewer Lines

Not every parcel needs sewer access.

No Planned Changes

PUBLIC PARTICIPATION
A questionnaire will be mailed directly to neighborhoods in Eastern Districts.
If you receive the questionnaire, please respond!
Before the facility plan is finalized, the public will be invited to participate in:

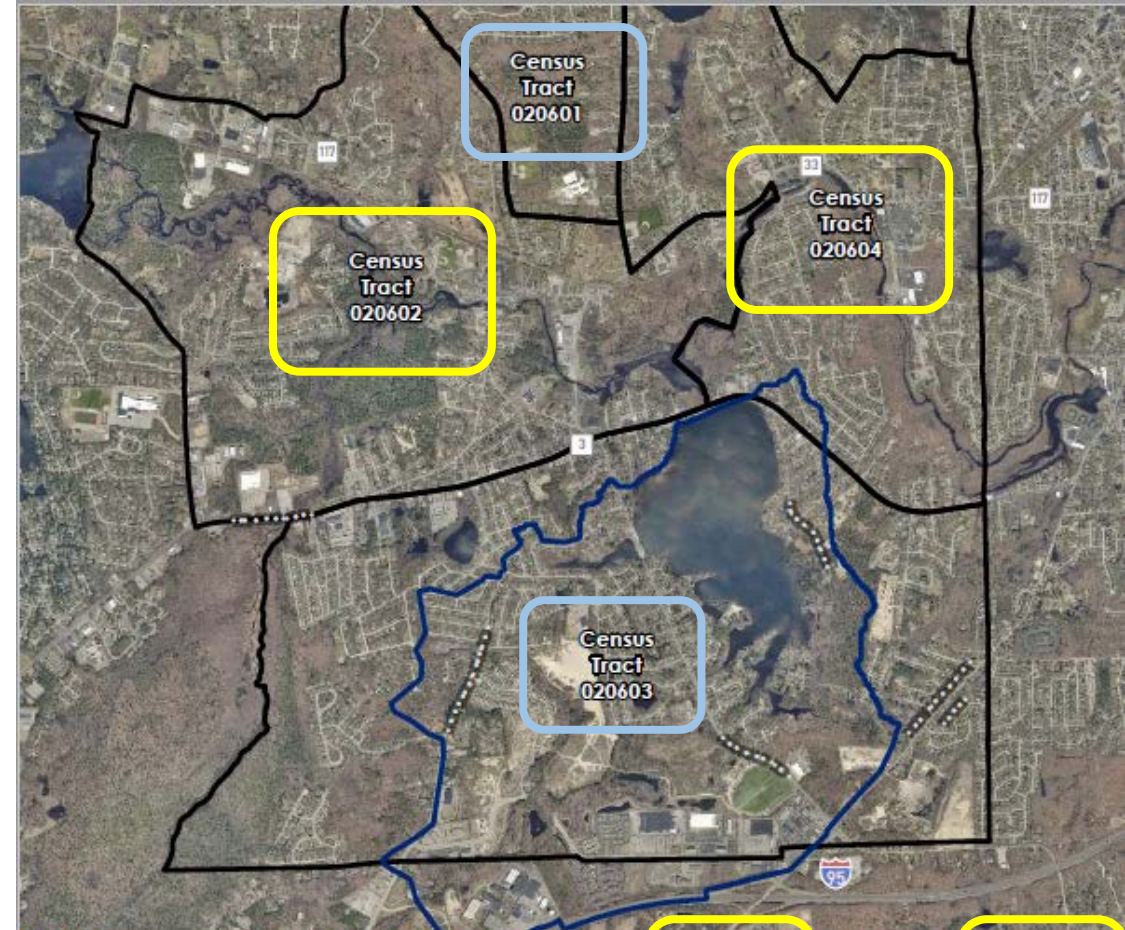
OPEN HOUSE **PUBLIC HEARING**
FALL 2022 **WINTER 2022**
Dates will be posted on the Town's website.
<https://www.coventryri.org/sewer-authority>

Your participation is important!

Data Collection

- Data Collection
 - Current KCWA Water Consumption
 - Current Sewer Collection System
 - Current Wastewater Discharge to West Warwick
 - Current Sewer Fund Finances
 - RIDEM/RIIB Funding Options
 - Census Tract Mapping and Median Household Income

- Alternatives Evaluation
 - GIS Mapping & DRAFT Planning Areas



Label	Rhode Island	Tract 020601	Tract 020602	Tract 020603	Tract 020604
Median income (dollars)	\$70,305	\$91,994	\$61,250	\$75,591	\$58,769
Mean income (dollars)	\$92,427	\$106,562	\$76,290	\$94,874	\$71,887
	Number of households				
Income Range	414,730	2,354	1,548	2,928	2,497
Less than \$10,000	5.60%	2.10%	9.50%	2.20%	3.40%
\$10,000 to \$14,999	4.90%	1.50%	4.40%	7.50%	3.40%
\$15,000 to \$24,999	8.10%	3.60%	7.20%	15.50%	16.60%
\$25,000 to \$34,999	7.80%	7.00%	7.00%	3.60%	6.50%
\$35,000 to \$49,999	10.80%	7.00%	9.30%	11.00%	13.90%
\$50,000 to \$74,999	15.80%	11.90%	19.00%	9.40%	19.00%
\$75,000 to \$99,999	13.30%	19.90%	12.60%	18.80%	11.00%
\$100,000 to \$149,999	18.30%	32.10%	23.20%	17.00%	15.40%
\$150,000 to \$199,999	7.80%	8.80%	3.00%	4.10%	9.10%
\$200,000 or more	7.70%	6.10%	4.80%	10.90%	1.80%

FP Project Addition to RIDEM's PPL

- 30-day Public Notice
- After PPL Addition – SRF Loan Application with RIIB

RHODE ISLAND DEPARTMENT OF ENVIRONMENTAL MANAGEMENT
OFFICE OF WATER RESOURCES
FY 2023

Priority Determination System
Requested Project Information Sheet

Applicant: Town of Coventry, RI Contact Person: Benjamin Marchant
Street Address: 1670 Flat River Rd Title: Town Manager
City & Zip Code: Coventry, RI 02816 Phone: 401.822.9185
Project Name/Number: Sewer Facility Planning Green Infrastructure (Y/N) Y
Total Cost: \$265,600 Anticipated Start Date: 7/13/2022

Project Description:
Sewer and OWTS Facility Planning including: assessment of OWTS, recommendations regarding WW Mgt. Districts, priority areas for sewer extension, a cost of service study, sewer ordinance and IMA review and recommendations.

Proposed or Predicted Water Quality Benefit (Include name of receiving or impacted waterbody):
Various surface water and groundwater bodies in Coventry, RI including but not limited to Flat River Reservoir, Stump Pond, Johnson's Pond, Tiogue Lake, Upper Dam Pond, and Middle Dam Pond.

DEM USE ONLY

\$150,000
Typical Cap

1-3 Year
Loan Term

1%
Interest Rate

30-Base Pt
Service Fee

SRF Loan and Loan Forgiveness Determination

- **Census data indicates the average Town-wide income for Coventry's residents is above the State's average, and given a Town-wide affordability evaluation of extending sewers will result in typical SRF financing (loan) options**
 - RIBB would consider clean water projects affordable to Coventry's residents.
- **Facility Plan will consider certain sewer extension projects within planning areas below the State average income threshold, which may qualify for loan forgiveness. Utilizing:**
 - RIBB overlay Census Tract mapping data to determine affordability of clean water projects.
- **Per RIDEM - Tiverton has been successful at creating WW Districts and receiving loan forgiveness for certain sewer extensions.**

Municipal Resilience Program & Action Grants

Upon successful completion of a 1-day MRP workshop, municipalities are designated as “Resilient Rhode Municipalities”

Enabling application for dedicated MRP Action Grants to implement identified projects

The 2022 grant capped each project’s grant at \$250,000

The expected 2023 cap for each project’s grant is expected to be \$500,000

The program is meant for projects that are “ready to proceed”

RIIB highly suggests participation of the Town Planning Director, Engineer, DPW Director, Town Manager, Assistant Town Manager, and any other staff the Town desires.

There is no cost to the Town of Coventry associated with the Workshop

Municipal Resilience Program – Rhode Island Infrastructure Bank

<https://riib.org/solutions/programs/municipal-resilience-program/>

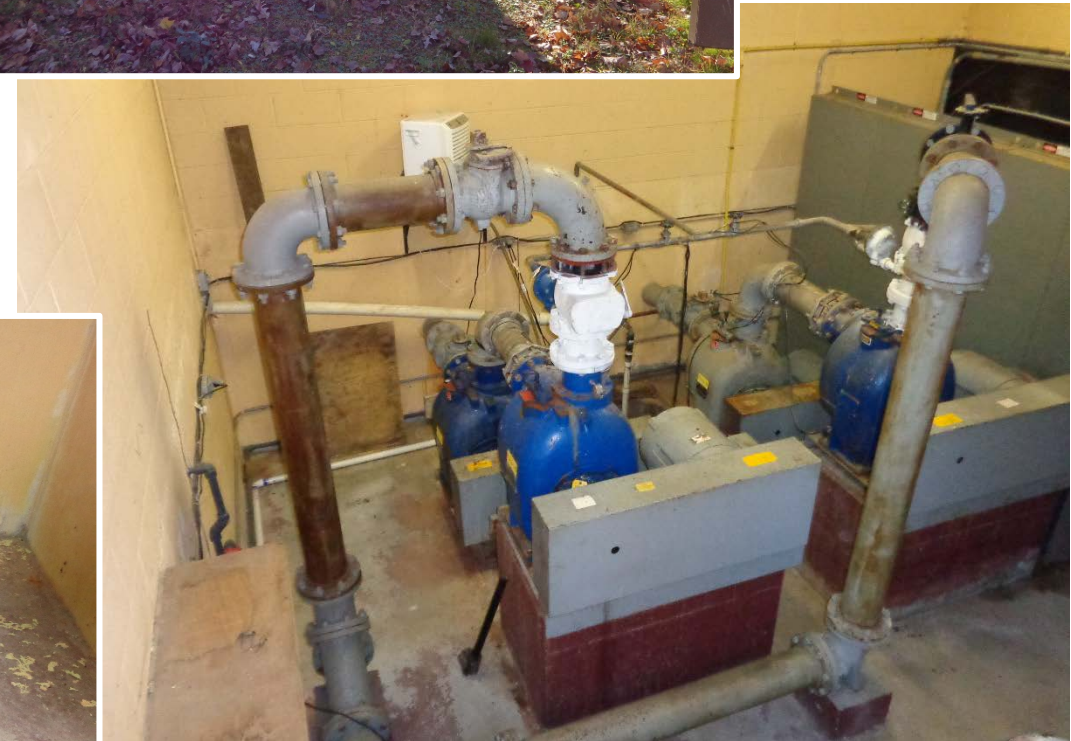
Pump Station OOC for CIP

- Existing Woodland Manor & Sandy Bottom Sewer Pump Stations

- Opinion of Cost Updates
- 2022 Cost Index Data
- Repair/Replacement

- Capital Improvements Projects (CIP) List Update & Consideration for:

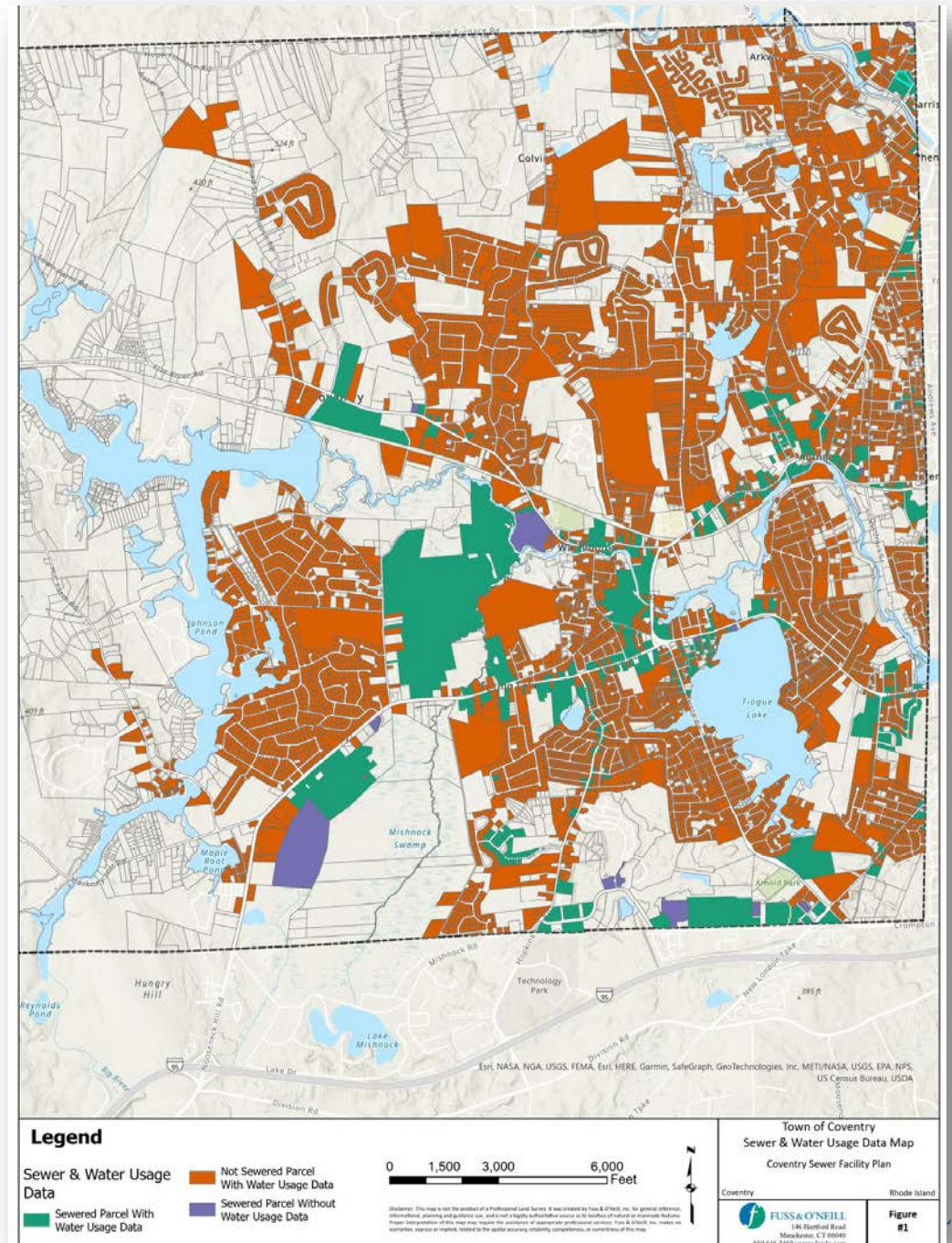
- ARPA Utilization
- SRF Loan
- Action Grant
- Other



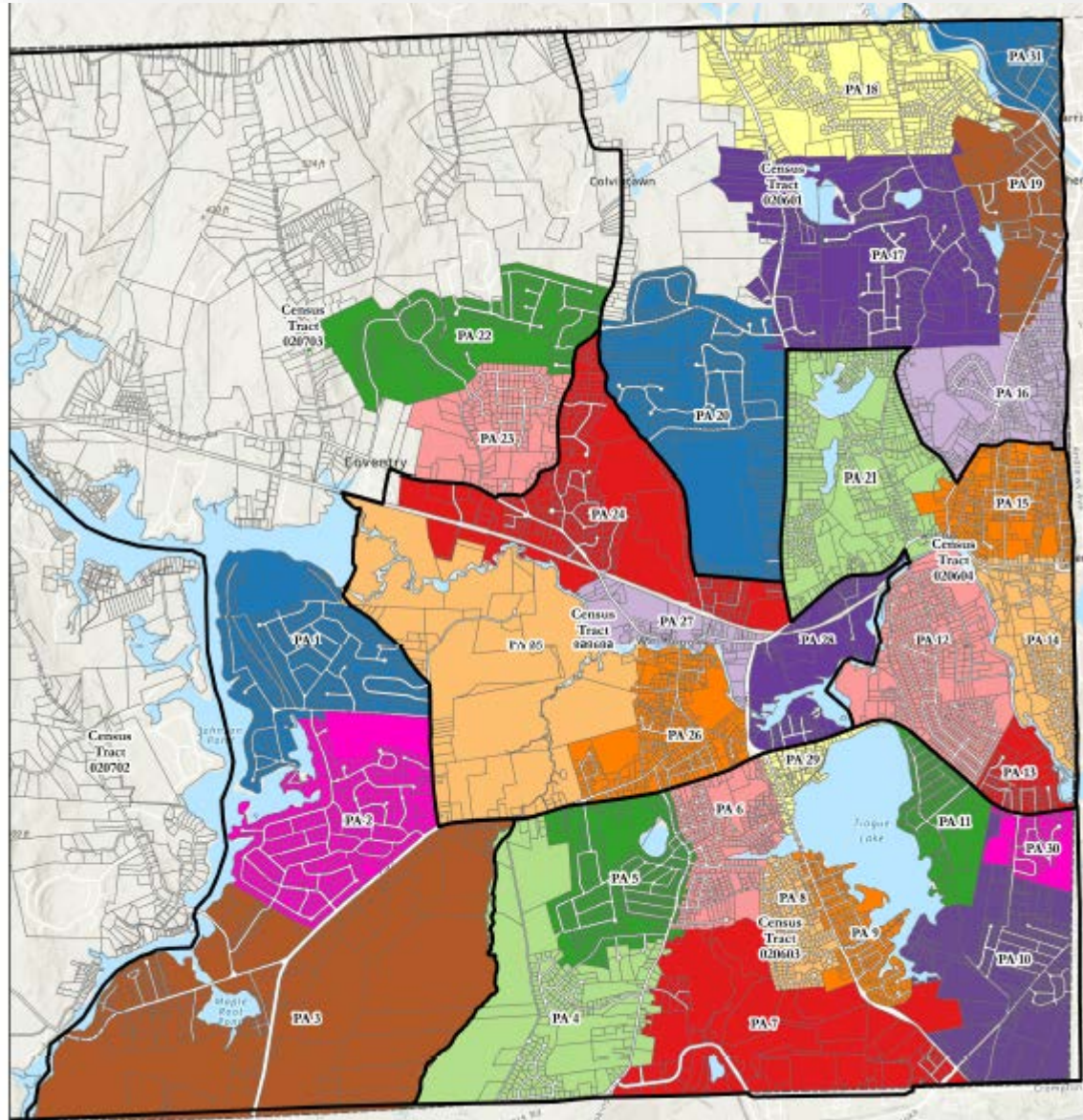
WORK IN-PROGRESS

Data Collection

- **Current Water Usage & Sewer Data**
 - Orange Parcels Non-Sewered w/ Water Usage Data
 - Green Parcels Sewered w/ Water Usage Data
 - Blue Parcels Sewered w/out Water Usage Data

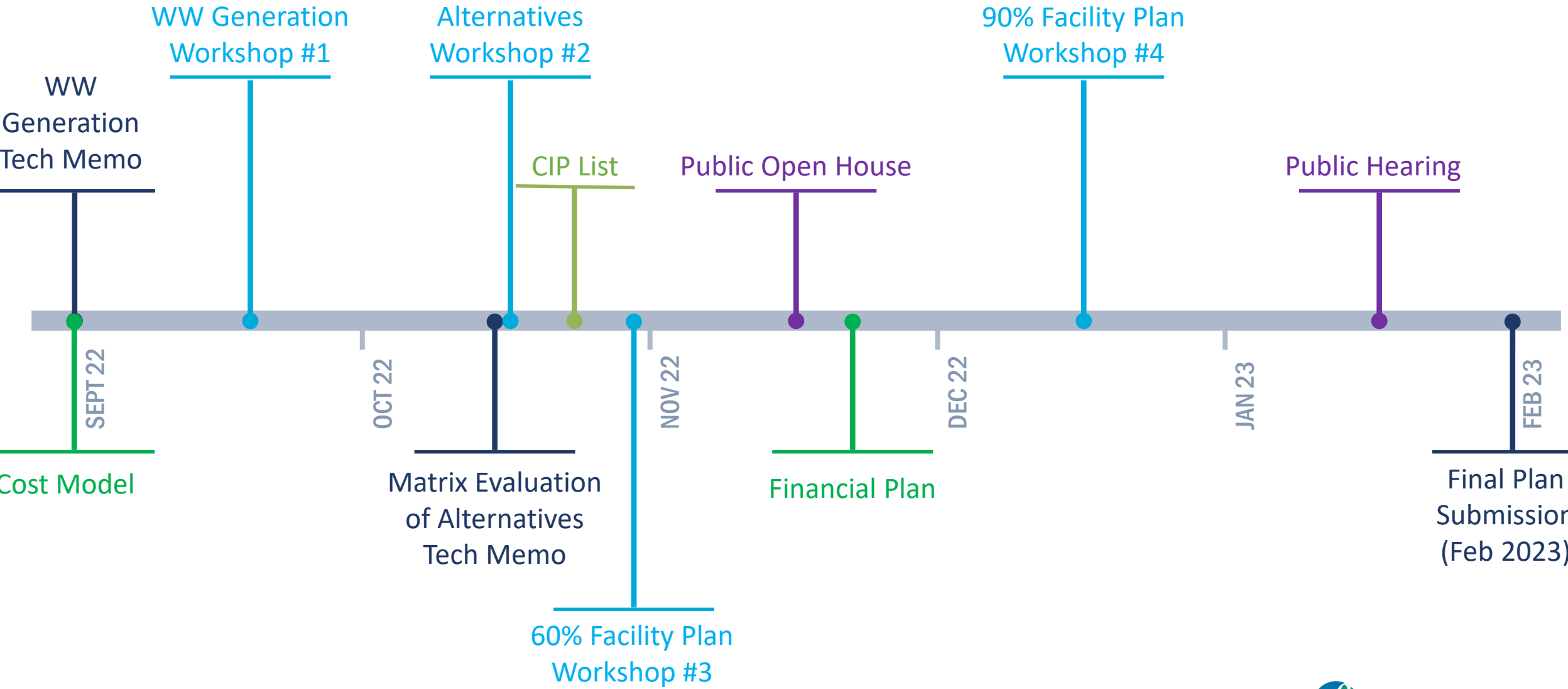


DRAFT Planning Areas



Planning Area	Total Annual Sewered Parcel 2021 Water Usage (Gal)	Total Annual Non Sewered Parcel 2021 Water Usage(Gal)
1	-	28,802,443
2	-	38,013,682
3	8,946,865	9,054,637
4	4,603,499	40,845,805
5	9,722,601	22,898,816
6	1,430,834	15,889,876
7	20,203,906	5,754,140
8	-	11,676,676
9	-	8,775,207
10	433,743	11,973,730
11	98,377	8,886,053
12	272,003	25,642,465
13	251529.96	3,641,656
14	1,292,873	23,857,699
15	2,603,795	13,226,779
16	581,278	7,837,035
17	-	22,094,282
18	-	20,524,604
19	332,284	14,581,318
20	-	29,301,681
21	5,423,524	15,561,093
22	-	17,313,687
23	176,139	9,261,355
24	609,732	20,189,118
25	21,799,547	2,132,735
26	2,641,547	12,891,787
27	2,370,988	1,757,381
28	1,455,279	4,381,410
29	1,637,185	2,171,130
30	4,596,774	2,089,942
31	9,312,323	2,204,468
Outside of Planning Areas	885,602	44,067,216
Total Annual Water Usage of Sewered Parcels:	101,682,230	Gallons/yr
Average Water Usage Per Day:	278,581.45	GPD
Total Water Usage of Not Sewered Parcels:	497,299,906	Gallons/yr
Average Water Usage Per Day:	1,362,465.50	GPD

Future Facility Planning Efforts



Coordination of Town Documents

CURRENTLY
UNDERWAY

1

Sewer Facility Plan -
by Fuss and O'Neill &
Coordination with BETA

2

CCP - by BETA & Coordination
with Fuss and O'Neill

FUTURE
NEEDS

3

Onsite WW Mgt Plan

- Coordination of FP Sewer Planning Areas & Onsite System Areas
- Key to Community Septic System Loan Program Participation

4

Sewer Ordinance

- Consider Ordinances from Other Towns
- Coordination of Cost of Service & FP Recommendations

5

Intermunicipal Agreement (IMA) with West Warwick

- Coordination of sewer ordinance, fees, legal requirements for adjacent Towns connected to Coventry's collection system.

Thank You!

Laura Marcolini, PE

401.861.3070 x4202

lmарcolini@fando.com

www.fando.com



FUSS & O'NEILL

Engineers | Scientists | Planners

Future Facility Planning Efforts

- **Finalize Existing and Future Wastewater Disposal Needs**
 - Deliverable Tech Memo anticipated 9/30/22 followed by workshop with Town
- **Matrix Evaluation of WW Alternatives within Planning Areas**
 - Consider : Env. Impacts, Affordability, Individual WW Disposal System Failures, Parcel Size and Density
 - Deliverable Tech Memo anticipated 10/15/22 followed by workshop with Town
- **Cost of Service Study**
 - Cost Model anticipated 9/30/22 followed by workshop with Town
 - Review Assumptions, Develop Capital Improvements Projects (CIP) List
 - Deliver Financial Plan
- **Recommended Plan & Coordination with Stakeholders**
 - 60% Workshop with Town anticipated late Oct 2022, RIDEM Review/Comment
 - 90% Workshop with Town anticipated mid Dec 2022, RIDEM Review/Comment
- **Public Participation**
 - Open House anticipated mid Nov 2022
 - Public Hearing anticipated mid Jan 2023
- **Submit Final Facility Plan**