

Facilities Plan Update

1. Introduction:
 - a. Facility Plan to be updated every 5-years for a 20-year future planning period. Last update was performed in 2010
 - b. History of this edition of the Facility Plan
 - 1995 Facilities Plan
 - 2003 Facilities Plan Reaffirmation
 - 2010 Facilities Plan Update
2. Goals of this Facility Plan Update:
 - a. Existing wastewater system
 - Hopkins Hill Road Sewer Project
 - Old North Road Sewer Project
 - New London Turnpike Sewer Project
 - Sewer Contracts 1-7
 - Woodland Manor PS/FM infrastructure acquisition
 - Sewers built by subdivision contractors/other misc. projects
 - b. Current and Future Flows into the Wastewater System
 - Total Coventry ADF Capacity = 2.25 MGD (excluding Woodland Manor)
 - Coventry Existing ADF = ~0.23 MGD (excluding Woodland Manor)
 - Woodland Manor ADF Capacity = 0.2 MGD
 - Woodland Manor Existing ADF = ~0.07 MGD
 - c. Assessment of the future wastewater planning
 - Future Sewer Contracts
 1. Sewer Contracts 8 – 10
 2. Hopkins Hill Road West Sewer Project
 3. Huron Pond Sewer Project
 4. Nooseneck Hill Road Sewer Project (added Planning Area N-1)
 - O&M and preventative maintenance items
 1. Town owned pump stations
 - Sandy Bottom Road Pump Station
 - Woodland Manor Pump Station
 - Industrial Drive Pump Station
 2. Flow Meter Calibration/Coordination
 3. Investigation program looking at the older areas of gravity sewers in Town (i.e. North Branch Interceptor, New London Turnpike, etc.)
3. Remaining Items:
 - a. Town Review and Comment
 - b. RI-DEM Review and Comment
 - c. Public Advertisement/Meeting
 - d. Final Submittal to RI-DEM

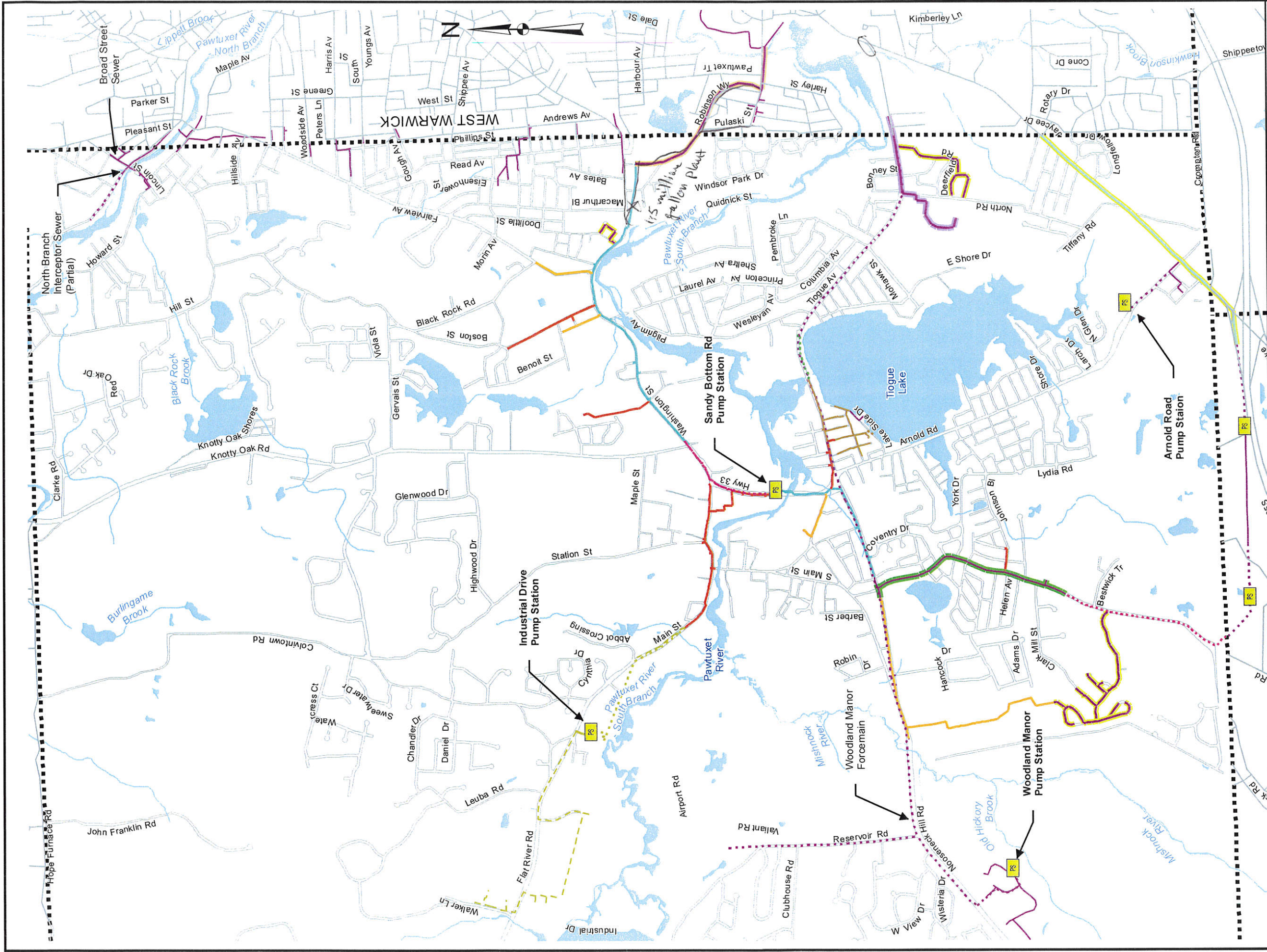


FIGURE 3-11

2015 FACILITIES PLAN UPDATE
EXISTING SEWER MAP

September 2015
SCALE: NOTED

Westor&Sampson

- Legend**
- | | | | |
|--|---|----------------------------|---------------------|
| Pump Station | Gravity Main - Other Sewer Projects | Force Main | Gravity Main |
| Gravity Main
Contracts 03-01, 04, 05 | North Road Terrace Sewer Project | Contracts 03-01, 04, 05, 6 | Installed by Others |
| Contract 03-01 | Old Port Authority Sewer Interceptor | Contract 03-01 | Force main |
| Contract 03-03 | Pulaski Street / Robinson Way Sewer Project | Contract 03-03 | Low Pressure Sewer |
| Contract 04 | RIDOT Hopkins Hill Reconstruction Project | Contract 04 | Lakes |
| Contract 05 | Gravity Main - Subdivisions | Contract 6 | Town Boundaries |
| Contract 6 | | Contract 6A | |
| Contract 7 | | Contract 7 (FM) | |
| | | Contract 7 (LP) | |

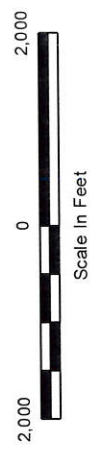
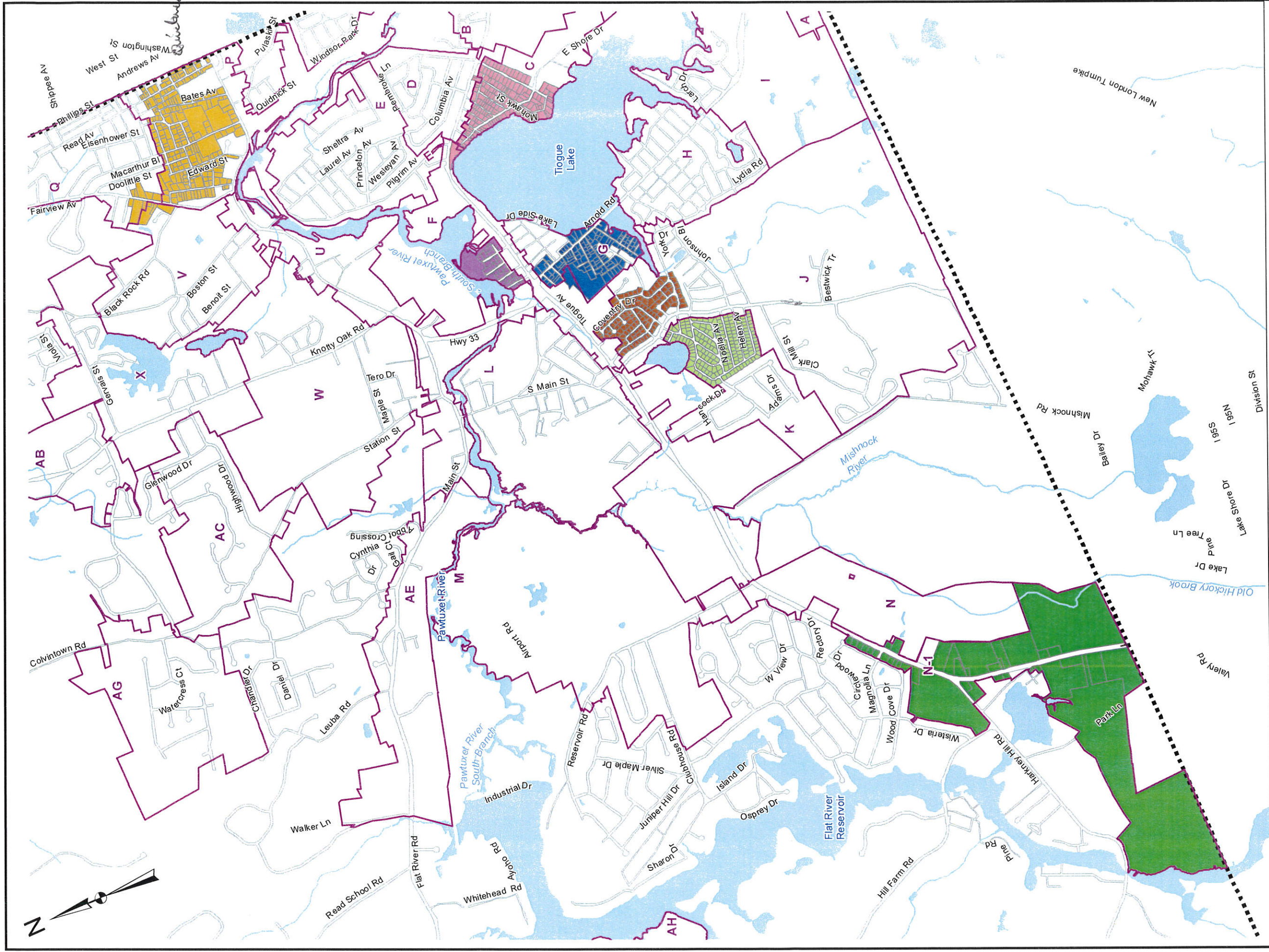


FIGURE 4-3
TOWN OF COVENTRY, RHODE ISLAND
2015 FACILITIES PLAN UPDATE

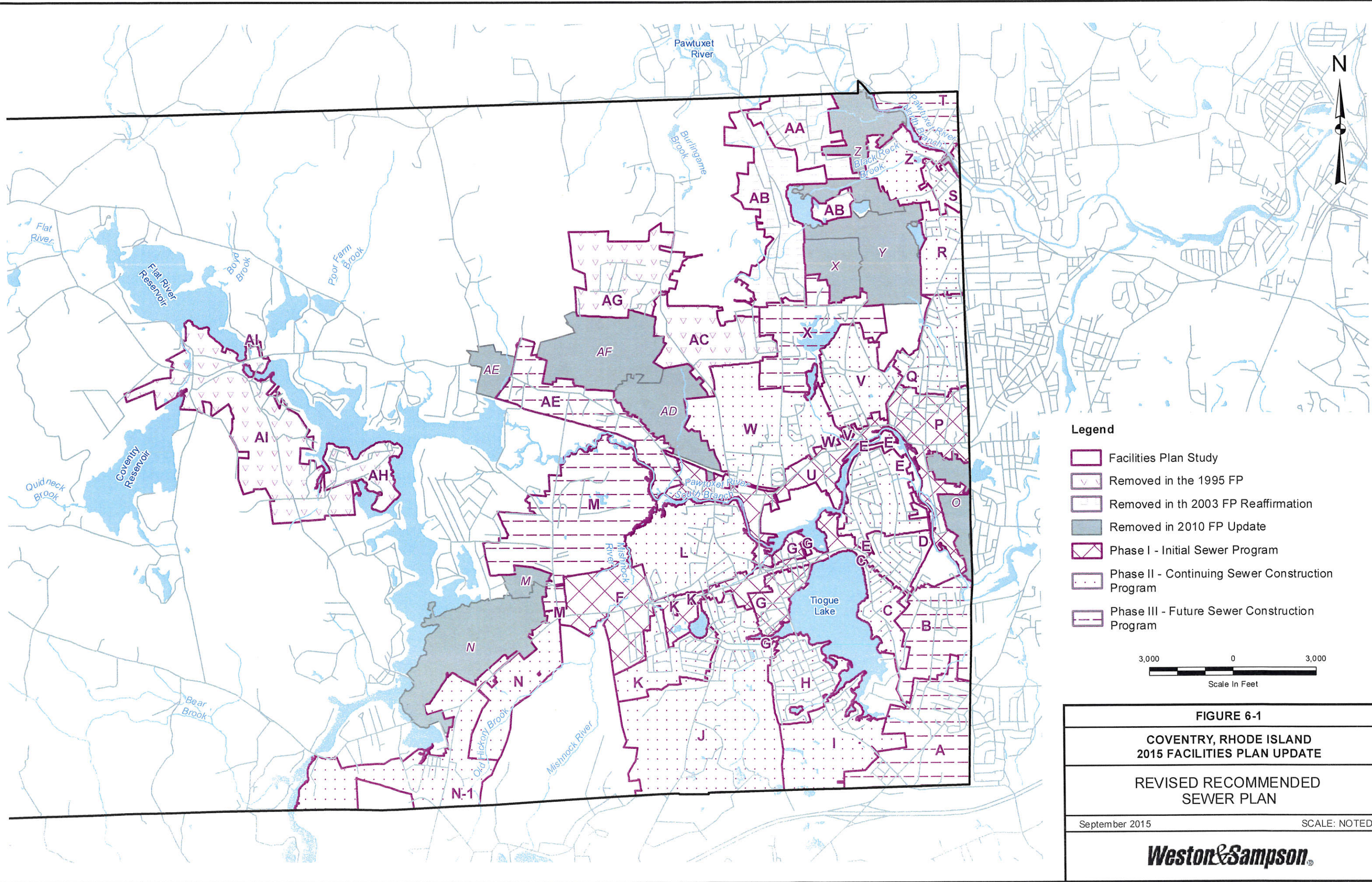
- Legend**
- Contract 8
 - Contract 9
 - Contract 10
 - Contract 11
 - Hopkins Hill East
 - Huron Pond
 - Water

PROPOSED SEWER CONTRACTS

September 2015

SCALE: NOTED

Weston&Sampson



- Legend**
- Facilities Plan Study
 - Removed in the 1995 FP
 - Removed in the 2003 FP Reaffirmation
 - Removed in 2010 FP Update
 - Phase I - Initial Sewer Program
 - Phase II - Continuing Sewer Construction Program
 - Phase III - Future Sewer Construction Program



FIGURE 6-1
COVENTRY, RHODE ISLAND
2015 FACILITIES PLAN UPDATE
REVISED RECOMMENDED
SEWER PLAN
 September 2015 SCALE: NOTED
Weston & Sampson

Path: \\pld\share\GIS\Data\StreetClient\ Coventry\Project\2140905\A\Figure6-1_Facilities plan update.mxd User: Ozerekoz Saved: 10/14/2015 12:13:48 PM Opened: 10/14/2015 12:14:08 PM