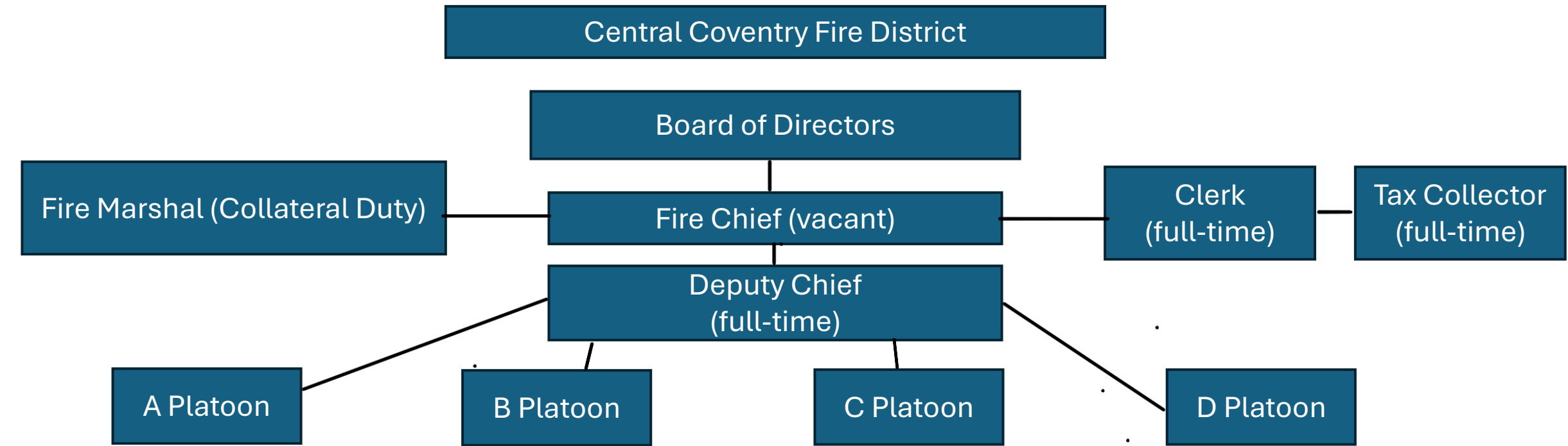


Washington Street Station

Engine 1, Ladder 1(if Quint-1 is unavailable) and Rescue 1
Cross-manned 1 Officer and 2 Firefighters

Minimum of 3 personnel on-duty

TOTAL of 12 full-time firefighters and 1 office staff position



Arnold Road Station

Engine 4: Captain and Firefighter

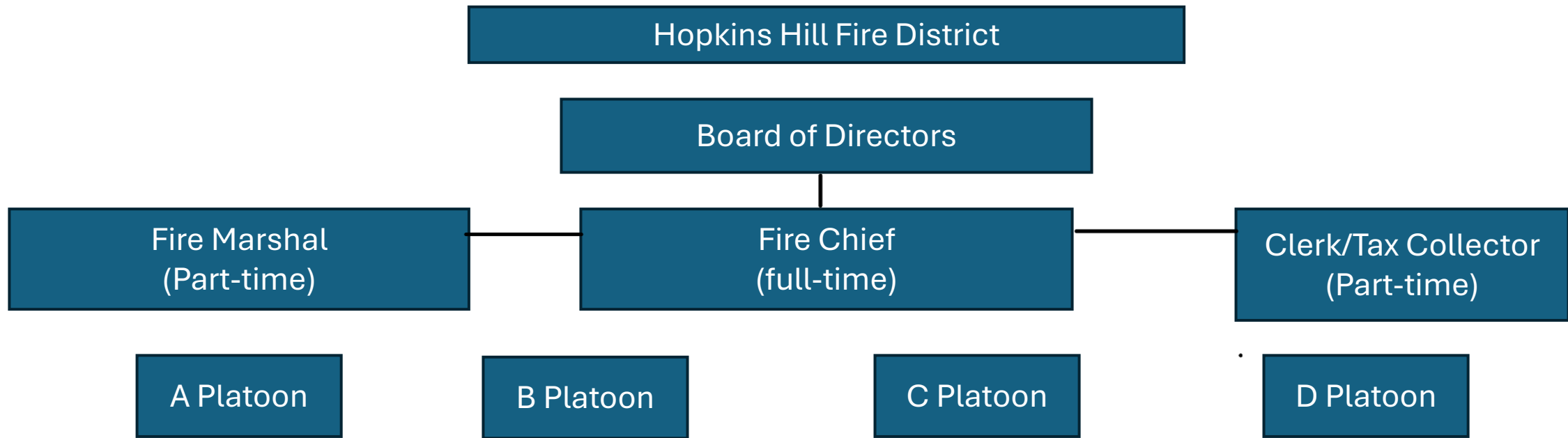
Rescue 4: Lieutenant and Firefighter

Flat River Road Station

Engine 7: Lieutenant and Firefighter
1 floater per shift

Each shift has a minimum of 6 personnel on-duty

TOTAL = 29 full-time personnel and 2 office staff positions



Hopkins Hill Road Station

Quint 1, Engine 6 and Rescue 6 cross-manned
1 Officer and 1 Firefighter

Each shift has a minimum of 2 personnel on-duty
TOTAL = 9 full-time firefighters